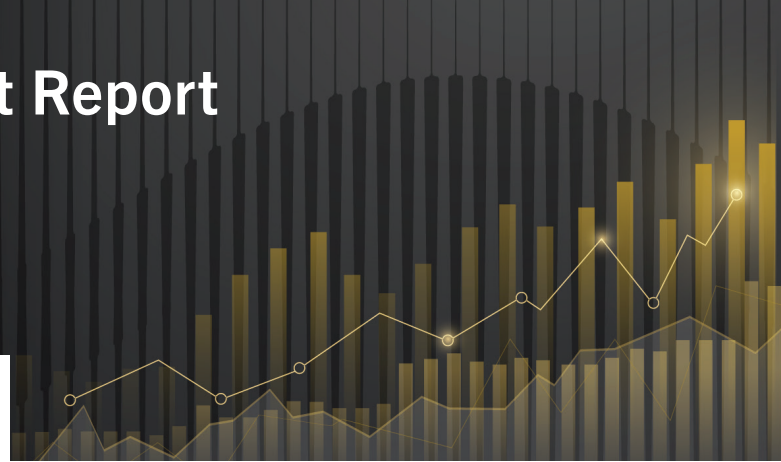


# Golub Capital Middle Market Report

FEATURING THE GOLUB CAPITAL ALTMAN INDEX



## U.S. Middle Market Continues to Show Strong Earnings and Revenue Growth

**Private equity-backed companies see sixth quarter of profit margin expansion.**

The Golub Capital Altman Index can provide early insight into financial performance of public companies and GDP in advance of earnings season.

Middle market private companies in the Golub Capital Altman Index grew earnings by 9% during the first two months of the fourth quarter of 2024. Revenue grew 6% during the same period.

Lawrence E. Golub, CEO of Golub Capital, said, “Revenue and earnings growth remained strong for companies in the Golub Capital Altman Index for the ninth consecutive quarter. The Consumer sector of the Index stands out for posting higher revenue and earnings growth rates in Q4 than in any other quarter of 2024. The solid performance of Consumer companies in our sample paints an encouraging picture of the U.S. consumer. We highlighted in prior quarters that the balance of headwinds and tailwinds facing consumers would be an important dynamic for investors to watch in the second half of 2024. Our early look at Q4 results suggests that the tailwinds from continued low unemployment, healthy wage growth, lower energy prices and lower interest rates prevailed. Looking forward, the health of the U.S. consumer may call for a slower pace of interest rate cuts than expected: one closer to the path implied by current Fed futures market prices than to the most recent Fed dot plot.”

Dr. Edward I. Altman said, “The consistency of revenue and earnings growth rates across sectors points to broad-based economic strength in Q4. Profit margins also continued to expand, as aggregate earnings growth materially outpaced aggregate revenue growth for a sixth consecutive quarter. We note that Consumer sector performance in Q4 could be even better than it looks from the strong performance of companies in our sample, as our data does not capture the robust holiday season spending in December. That said, we encourage investors to remain vigilant about performance dispersion within sectors and within portfolios; strong median performance does not tell the whole story, and skill at avoiding problem credits and at managing them effectively when they occur are critical differentiators of long-term investor performance.”

The Golub Capital Altman Index (“GCAI”), which is produced by Golub Capital in collaboration with credit expert Dr. Edward I. Altman, is the first and longest-running index based on actual revenue and earnings (defined as earnings before interest, taxes, depreciation and amortization, or “EBITDA”) for middle market companies. It measures the median revenue and earnings growth of approximately 110–150 private U.S. companies in the loan portfolio of Golub Capital, a leading middle market lender.

## GOLUB CAPITAL ALTMAN INDEX HIGHLIGHTS

Year-Over-Year (YoY) Growth	Revenue	Earnings
<b>Q4 2024</b>	<b>5.9%</b>	<b>9.3%</b>
Key Sectors Q4 2024 (YoY)	Revenue	Earnings
<b>Consumer</b>	<b>5.2%</b>	<b>7.7%</b>
<b>Healthcare</b>	<b>5.3%</b>	<b>4.4%</b>
<b>Industrials</b>	<b>6.3%</b>	<b>7.4%</b>
<b>Technology</b>	<b>9.1%</b>	<b>10.7%</b>

Source: Golub Capital Internal Data.  
Please see footnote on page 4.

Reported shortly before public company quarterly earnings season, the GCAI has served as a reliable indicator of the overall growth rates in revenue and earnings of public companies in market indexes such as the S&P 500 and S&P SmallCap 600 (“S&P 600”), as well as quarterly Gross Domestic Product (“GDP”), according to statistical back-testing dating back to 2012, when data began to be tracked.

The size and diversity of the Golub Capital loan portfolio ensure that the confidentiality of all company-specific information used in the index is maintained in both the aggregate and industry segment data.

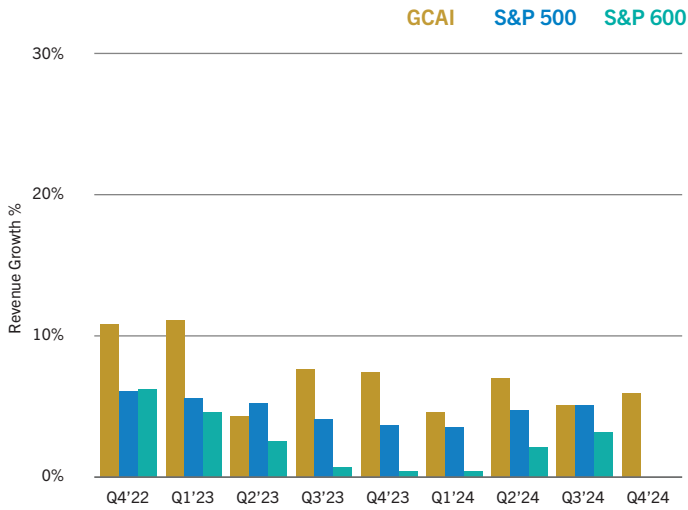
We believe the results (1) are representative of the general performance of middle market companies, which are a major contributor to U.S. private sector employment; (2) can be easily compared to the performance of the public companies that make up major stock indexes; (3) are relevant to the aggregate economic performance of the U.S. economy; and (4) provide timely information for the investment community.

The companies in the GCAI operate in a wide range of industries. Results are provided for the total universe of GCAI constituents and by industry segment. Given the index’s limited exposure to Financials, Utilities, Energy and Materials, comparisons are made to the S&P 500 and S&P 600 as well as to “adjusted” versions of those indexes that exclude the aforementioned sectors.

**GOLUB CAPITAL**

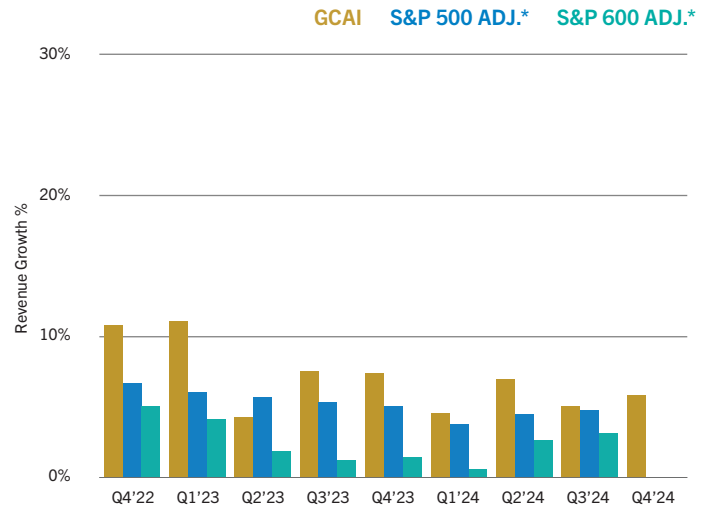
## GCAI Revenue and Earnings Growth

### REVENUE GROWTH (Quarterly YoY)



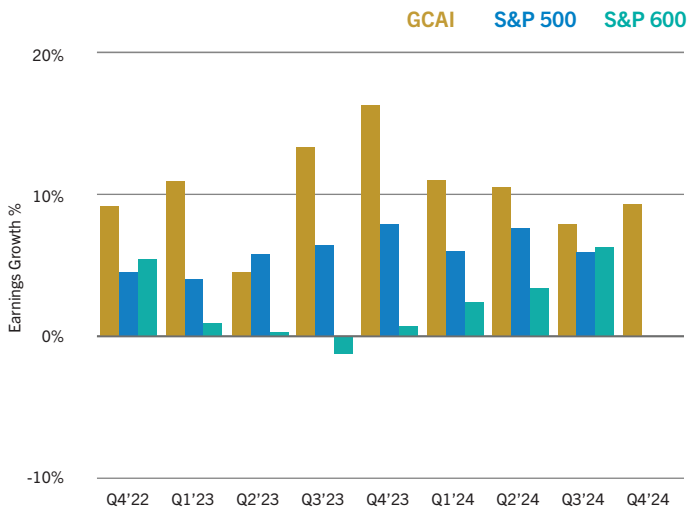
Source: Golub Capital Internal Data and S&P Capital IQ.  
Please see footnote on page 4.

### REVENUE GROWTH (Quarterly YoY) GCAI vs. ADJ. INDEXES



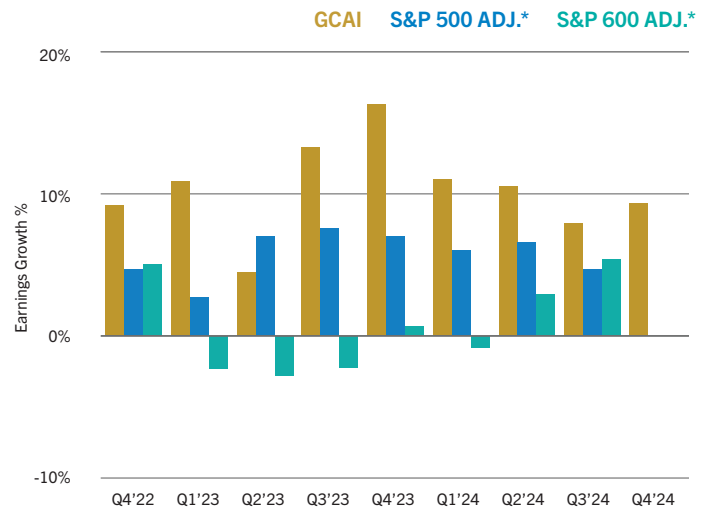
Source: Golub Capital Internal Data and S&P Capital IQ.  
\* Note: Indexes are adjusted to exclude the Energy, Financials, Materials, Real Estate, Telecommunications Services and Utilities industries.  
Please see footnote on page 4.

### EARNINGS GROWTH (Quarterly YoY)



Source: Golub Capital Internal Data and S&P Capital IQ.  
Please see footnote on page 4.

### EARNINGS GROWTH (Quarterly YoY) GCAI vs. ADJ. INDEXES



Source: Golub Capital Internal Data and S&P Capital IQ.  
\* Note: Indexes are adjusted to exclude the Energy, Financials, Materials, Real Estate, Telecommunications Services and Utilities industries.  
Please see footnote on page 4.

---

## About the Golub Capital Middle Market Report

The Golub Capital Middle Market Report analyzes the results of the Golub Capital Altman Index (“GCAI”), which measures the median revenue and earnings growth of approximately 110–150 privately owned companies in the Golub Capital loan portfolio for the first two months of each calendar quarter. It compares these results to the financial performance of well-known market indexes, including the S&P 500 and S&P SmallCap 600. The GCAI is produced by Golub Capital in collaboration with credit expert Dr. Edward I. Altman. Effective Q2 2022, the GCAI excludes Golub Capital portfolio companies that have recurring revenue-based credit facilities. The data referenced herein may not reflect all companies in the loan portfolio of Golub Capital during the time periods indicated.

---

## About Golub Capital

Golub Capital is a market-leading, award-winning direct lender and experienced private credit manager. We specialize in delivering reliable, creative and compelling financing solutions to companies backed by private equity sponsors. Our sponsor finance expertise also forms the foundation of our Broadly Syndicated Loan and Credit Opportunities investment programs. We nurture long-term, win-win partnerships that inspire repeat business from private equity sponsors and investors.

As of October 1, 2024, Golub Capital had over 1,000 employees and over \$70 billion of capital under management, a gross measure of invested capital including leverage. The firm has offices in North America, Europe and Asia. For more information, please visit [golubcapital.com](https://golubcapital.com).

---

## About Dr. Edward I. Altman

A leading expert on credit markets, Dr. Edward I. Altman is the Max L. Heine Professor of Finance, Emeritus at the NYU Stern School of Business, and Director of Research in Credit and Debt Markets at the NYU Salomon Center for the Study of Financial Institutions. He is currently an advisor to several foreign central banks. Professor Altman has published or edited two-dozen books and over 150 articles in scholarly finance, accounting and economic journals. He has been inducted into the Fixed Income Analysts Society Hall of Fame, served as President of the Financial Management Association, was an FMA Fellow, and was amongst the inaugural inductees into the Turnaround Management Association Hall of Fame. He received his MBA and Ph.D. in Finance from the University of California, Los Angeles.

---

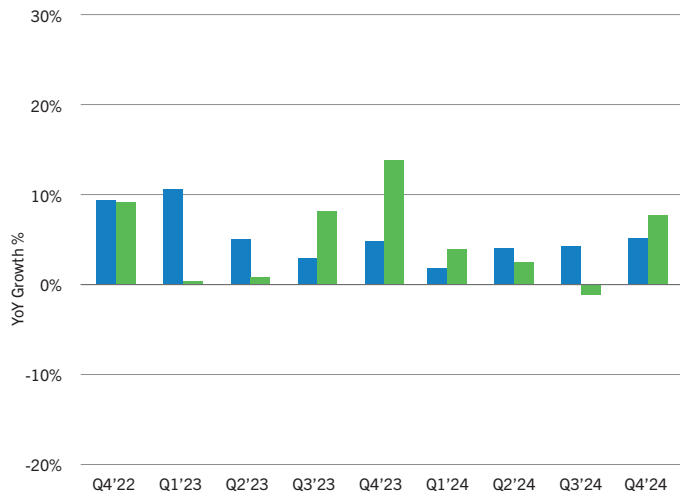
## Media Contact

[press@golubcapital.com](mailto:press@golubcapital.com)

## Appendix: GCAI Results by Sector

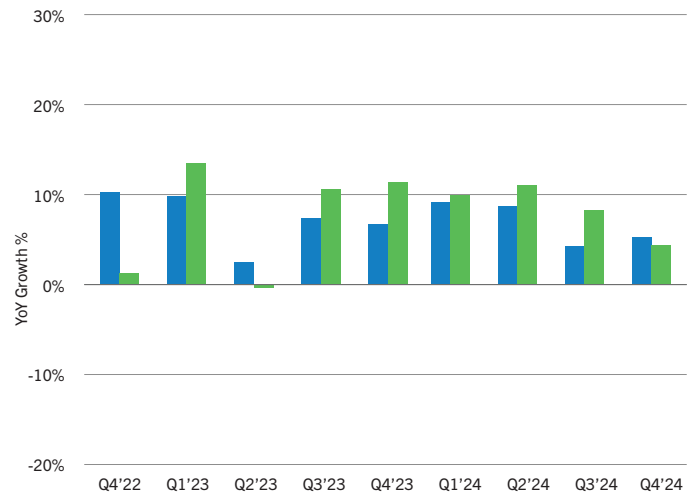
Additional information can be found below regarding sector trends in the Golub Capital Altman Index.

### CONSUMER REVENUE EARNINGS



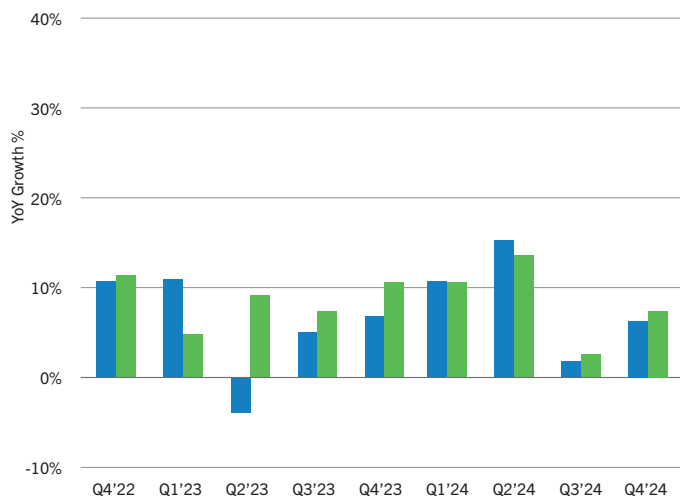
Source: Golub Capital Internal Data.  
Please see footnote.

### HEALTHCARE REVENUE EARNINGS



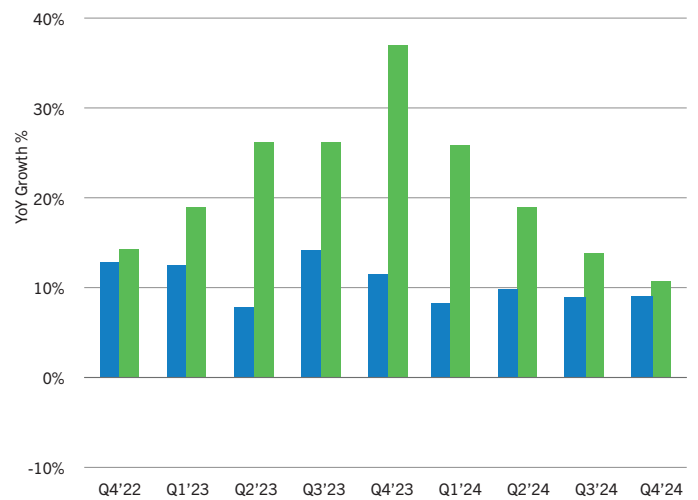
Source: Golub Capital Internal Data.  
Please see footnote.

### INDUSTRIALS REVENUE EARNINGS



Source: Golub Capital Internal Data.  
Please see footnote.

### TECHNOLOGY REVENUE EARNINGS



Source: Golub Capital Internal Data.  
Please see footnote.

## Important Disclosure

The Golub Capital Altman Index is provided as an indicator only and does not constitute investment advice or the offer to sell or a solicitation to buy any security. Some of these statements constitute forward-looking statements, which may be predictions about future events, future performance, or future financial conditions. Some of these statements reflect opinions based upon the data presented in the Index, and these opinions may be incorrect. Actual results could vary materially from those implied or expressed in such forward-looking statements for any reason. The Golub Capital Altman Index has been created on the basis of information provided by third-party sources that are believed to be reliable, but the information has not been verified independently by Golub Capital. Golub Capital makes no warranty or representation as to the accuracy or completeness of such third-party information.

## Footnotes

- Effective Q2 2022, the Golub Capital Altman Index (GCAI) excludes Golub Capital portfolio companies that have recurring revenue-based credit facilities. The data referenced herein may not reflect all companies in the loan portfolio of Golub Capital during the time periods indicated.